

2019 Community Impact Report



**EXPANDING
OUR REACH**

Dear Friends,

2019 was a remarkable year for Christine Ann – our 35th year in this community! We served more clients in each of our core programs than ever before. We reached new communities, met youth in new schools, and built new partnerships. From our new office in Green Lake to a 150% increase in trafficking survivors identified and cared for, we've expanded our reach to better help those impacted by domestic abuse.

We could not do our work without the many businesses, organizations, and individuals who value and support our mission. In the uncertain months ahead, we will continue to offer services that are essential for those experiencing abuse and find comfort in the fact that our community has our back.

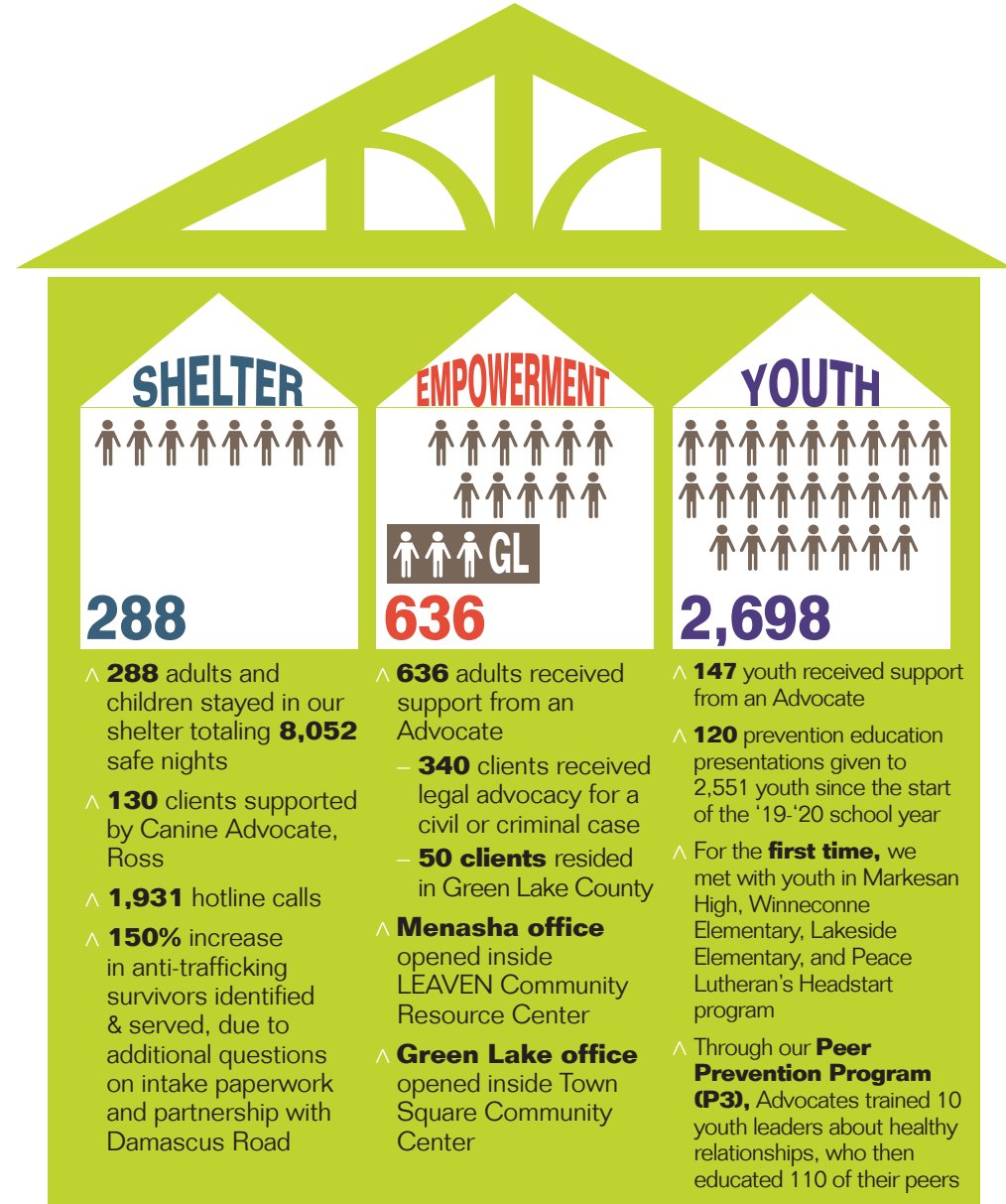
During this unprecedented situation, we are still up to the challenge of ending domestic abuse. Are you with us?



Sincerely,

Beth Oswald
Executive Director

PROGRAM HIGHLIGHTS



- ^ **288** adults and children stayed in our shelter totaling **8,052** safe nights
- ^ **130** clients supported by Canine Advocate, Ross
- ^ **1,931** hotline calls
- ^ **150%** increase in anti-trafficking survivors identified & served, due to additional questions on intake paperwork and partnership with Damascus Road
- ^ **636** adults received support from an Advocate
 - **340** clients received legal advocacy for a civil or criminal case
 - **50 clients** resided in Green Lake County
- ^ **Menasha office** opened inside LEAVEN Community Resource Center
- ^ **Green Lake office** opened inside Town Square Community Center
- ^ **147** youth received support from an Advocate
- ^ **120** prevention education presentations given to 2,551 youth since the start of the '19-'20 school year
- ^ For the **first time**, we met with youth in Markesan High, Winneconne Elementary, Lakeside Elementary, and Peace Lutheran's Headstart program
- ^ Through our **Peer Prevention Program (P3)**, Advocates trained 10 youth leaders about healthy relationships, who then educated 110 of their peers

EMPOWER • SAFETY • SUPPORT • HELP

MISSION Empower individuals and families through education, safety and support and lead our community to reduce the incidents of domestic abuse and dating violence.

VISION To end the cycle of domestic abuse and dating violence

SELF SUFFICIENCY • HOPE • HEALING

IS HERE • GROWTH • TRUST • ADVOCACY

ADVOCACY is the foundation of Christine Ann's work. Our services are always client-centered and client-led. Our Advocates provide education, options, and support to survivors based solely on the survivor's needs and goals. We support our clients' choices, even if we might choose differently, and acknowledge that every survivor has their own journey.

COMMUNITY

Working Together with Law Enforcement

The Lethality Assessment Protocol or LAP is an evidence-based tool used by law enforcement to assess a victim's level of danger when responding to a domestic violence incident. **Individuals in highly dangerous situations are immediately connected to a local domestic abuse program** in an effort to reduce the risk of re-assault and intimate partner homicide in our community.

The LAP has been **implemented by 11 law enforcement agencies and two district attorney offices in Winnebago and Green Lake Counties**. Together, we continue to put the safety of victims first and put resources for safety and support right at their fingertips. Since it was implemented locally in June 2019, many survivors have been connected to our services following an LAP. **We expect even more referrals as the process becomes more widely used in our service area.**



Culture & Engagement

Christine Ann has had the privilege of working with Alison Starr of Tashi Deley, a local consulting firm that focuses on strengthening internal culture, teams and leadership within organizations. **Ali generously donates her time** monthly to help Christine Ann develop an internal culture of teamwork and support so that our staff can be at their best to serve clients. Ali is also working closely to onboard our newest team member, Katie, who has taken the role of Culture and Engagement Specialist. Katie will continue to build upon and support Christine Ann's work to **create an uplifting culture both internally and throughout the community.**



HIGHLIGHTS

Dine Out Against Domestic Abuse

In October 2019, we hosted our first-ever *Dine Out Against Domestic Abuse* event. **October is Domestic Violence Awareness Month** and the event was a great opportunity to raise awareness and funds for survivors in our community who are impacted by abuse. We were so grateful to have **21 local restaurants and many community members participate, helping us raise over \$5,000!** We look forward to growing this event in 2020.



Take Back the Night

Take Back the Night is an annual event that provides attendees with the opportunity to **take a stand against sexual and domestic violence in our community**. In 2019, Christine Ann and REACH Counseling moved the event to Becketts (previously held on the University's campus) as a way to involve a greater array of community members. The change in venue was a success, with over **200 in attendance, including 10 different community resource partners, exhibitors and guests**. Not only did this event spark critical conversation surrounding domestic and sexual violence in our community, but it also gave survivors support by showing just how many people care and want to stand up against abuse. Thank you to Becketts for donating the event space and to all the participating organizations, volunteers, and guests!



SAVE THE DATE:



Race for the Light

**Saturday,
December 5, 2020**



Saturday, March 27, 2021

VOLUNTEER

VOLUNTEER OF THE YEAR

PAUL PETERSON

“It is a very humbling and rewarding experience. Volunteering at Christine Ann is one of the best decisions I’ve ever made.”



Paul has been volunteering with CADASI for the last 1.5 years. Paul assists with our fundraisers and children’s program. Paul is a safe and consistent person for the children that attend our children’s program group and has built connections with the children and remains a constant and positive person in their lives.

Paul was chosen as our Volunteer of the Year for 2019 because he leads with integrity and displays kindness to everyone he interacts with. It’s dedicated volunteers like Paul who truly help us make an impact on our community.



51 INDIVIDUALS who regularly volunteered,
totaling **2,688** HOURS of service

HIGHLIGHT

VOLUNTEER GROUP OF THE YEAR



Old National Bank has been a supporter of Christine Ann for over 15 years with sponsorships and volunteering for our major fundraisers, Men Who Cook and Race for the Light. In addition to sponsoring Race for the Light again in 2019, they generously increased their support with a \$7,500 grant to our Help Is Here Fund, which provides direct financial assistance to survivors of domestic abuse. This fund helps our clients with transportation, apartment application fees, gift cards for groceries, legal fees, lock changes, and more. We are so grateful for community partners like Old National Bank who join with us to end domestic abuse.



434 group volunteers gave
1,043 HOURS of their time cleaning, organizing,
cooking a meal, and volunteering at our fundraisers

SURVIVOR HIGHLIGHT

“ I had lost my identity, dignity, and sense of self. She was masterful in her approach and I took on all that she said: “You’re not abused, you’re just crazy”. I questioned my sanity, felt powerless, felt meaningless, and allowed her to render me voiceless in my life, my family, and my finances. **As a way of surviving in my relationship with her, I stopped doing the things that I enjoyed.** In order to keep peace in my marriage, I became completely isolated. My life’s focus became about not upsetting her and shielding my kids from her volatile behavior. **My life was a complete mess.**

I was lost, I needed help. I called Christine Ann and made an appointment to speak with someone. **The information and care I received was a turning point in my situation.** The Empowerment Advocate was one of the first to actually “hear” me and my experience. The abuse, manipulation, and control had become such a routine part of me that I couldn’t even see it. Christine Ann’s support and understanding of my experiences **helped me recognize the unhealthiness I was living through.** Their support showed me how to begin my journey to separating.

If not for the help provided by Christine Ann, I’m not sure I would have developed to courage to leave. I am not proud of that period of time in my life. Yet, I am grateful for the opportunity it has given me. If not for that relationship, I wouldn’t have a platform to demonstrate the impact abusive relationships can have on anyone – on you or me. Life can change, circumstances arise, and you or someone you love could become vulnerable to an abusive relationship. **Abuse does not discriminate. But, luckily for me, neither does Christine Ann.** ”

– male client



29 ADULT MALE SURVIVORS SERVED

4 STAYED IN SHELTER for a total of **95** SAFE BED NIGHTS

STAFF HIGHLIGHT



BALEIGH

In late August 2019, Baleigh joined our Youth Team as Prevention Educator. Having previously been an intern at Christine Ann, she developed a passion for working in the domestic abuse sector. In her new position, Baleigh works primarily in local schools, giving presentations on healthy relationships to elementary, middle, and high school youth. Since the beginning of the 2019-2020 school year, she has presented to 2,550 school-aged youth. This position is made possible by generous multi-year investments from Kimberly-Clark Corporation and Women’s Service League of Oshkosh. CADASI is grateful for the energy, positivity, and care Baleigh brings to her work with youth.

If you could say one thing to anyone experiencing domestic abuse, what would you say? **“The abuse that has occurred is not acceptable and is not your fault. You are seen, you are heard, and there is help out there when you’re ready.”**

ANNIE

Annie joined Christine Ann in September 2019 as our Family Shelter Services Advocate. This position combines two previous positions, making for more efficient services to clients. Annie works with parents and children who have fled domestic abuse and are residing in our shelter. She helps families adjust to life in shelter, work toward goals, process trauma, heal from domestic abuse, and learn about healthy relationships.

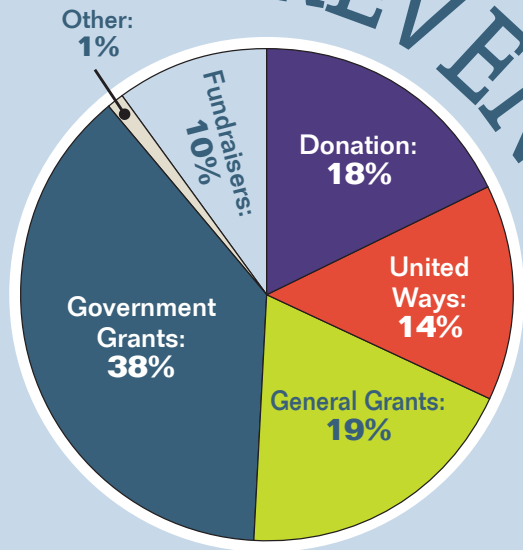


When asked what she thinks is the focus of this generation of Advocates, Annie says, “I believe the focus of this generation of advocates will be intersectionality. So not only bringing domestic abuse awareness to light for just women, but also for men, LGBTQIA+ individuals, people of color, as well as individuals with disabilities.” We are so grateful for Annie’s tenacity, hard work, and compassion when working with families impacted by domestic abuse.

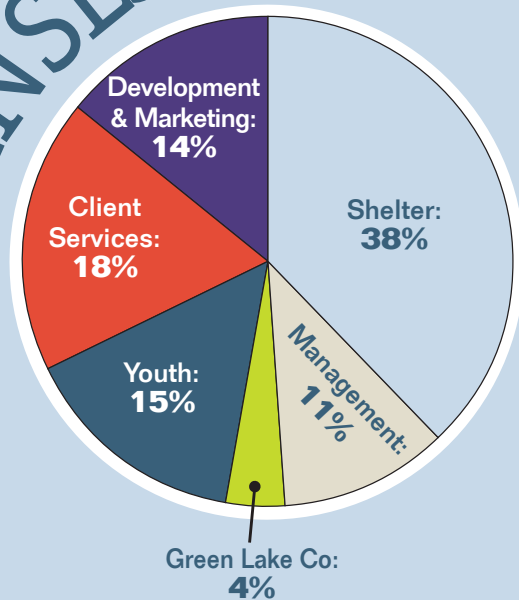
If you could say one thing to anyone experiencing domestic abuse, what would you say? **“I believe you and it is not your fault.”**

2019

REVENUE



EXPENSES



BOARD OF DIRECTORS

Heidi Burnett – President

Sarah Ziemba – Past President

Karen Oram – Treasurer

Hillary Anderson – Vice President

Sarah Freiburger – Secretary

Todd Christopherson

Matthew Kaemmerer

Mark Delveaux

Jill Hanegraaf-Staffeld

Alicia Dambeck

Kelly Fink

Why did you choose CADASI to donate your time and talents to?

“It’s not something people casually bring up in conversation, but when me being board treasurer comes up, it’s unbelievable how many people have a story to tell. And although that has led to good conversations and bonding, it has made me realize how prevalent it is in all our lives and has woken up a passion for a cause that I otherwise wouldn’t have known much about.”

“The passion of the entire organization is energizing and uplifting; I simply love being part of that and the great cause we’re serving.”

LEADERSHIP

BETH OSWALD

Executive Director

SARAH AVERKAMP

Development & Marketing Director

KARI BELLILE

Program Director



Advocacy is a lot like hiking with someone who has on a backpack full of weights that they didn't choose to carry, believing the weight is there before you ever see it, and sometimes holding on to those weights. Advocacy is being willing to hike again with someone who has on that same backpack full of weights, or continuing to hike with them while they leave the weights behind. Advocacy is always about following their lead and matching the pace they set.